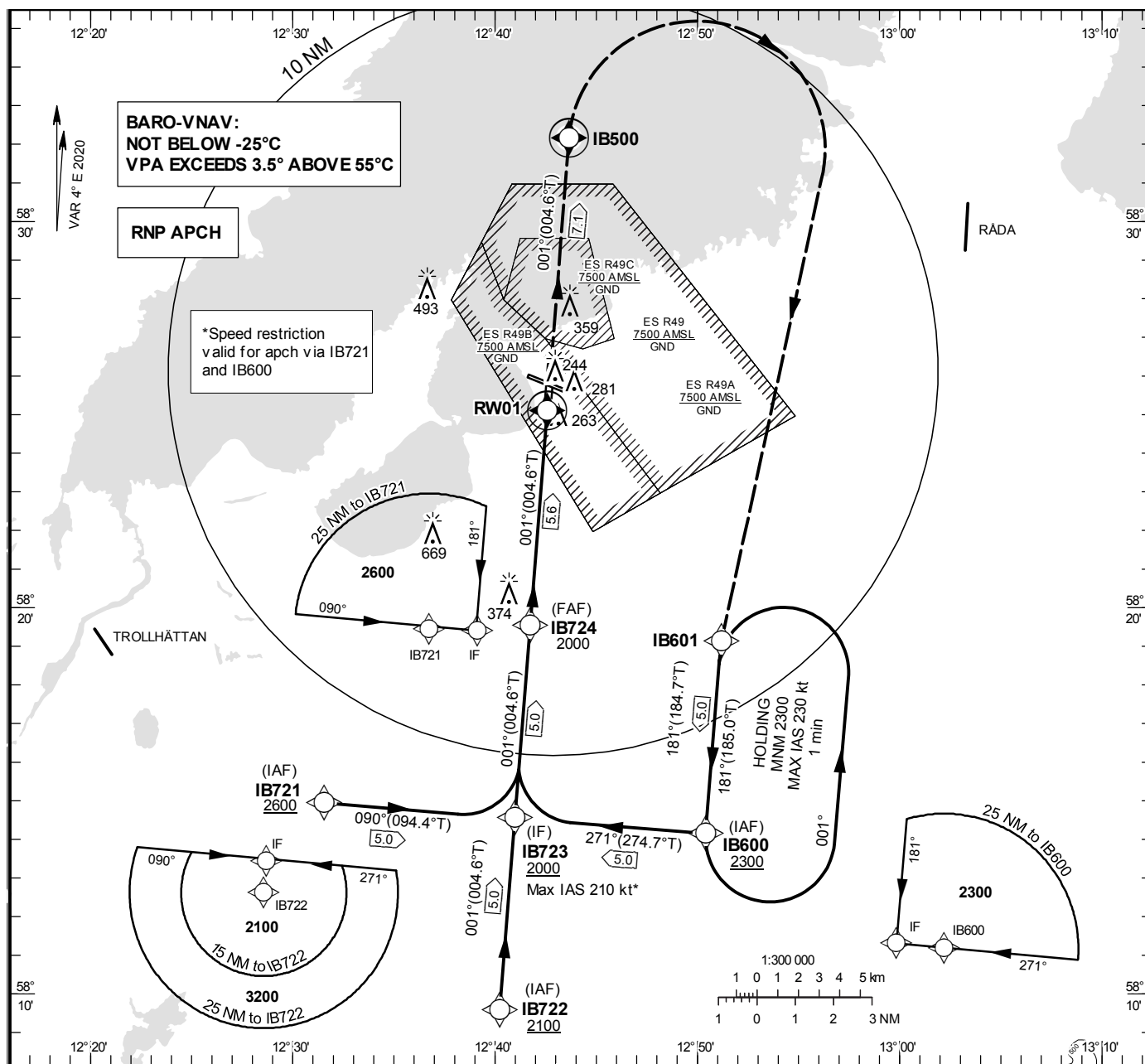


SÄTENÄS

RNP RWY 01

EGNOS Ch 95314 E01A

INSTRUMENT  
APPROACH  
CHART – ICAOTHR ELEV 169.4 ft, AD ELEV 181 ft  
OCH are related to THR.  
BRG are MAG (True).  
ALT, HGT and ELEV in ft.SÄTENÄS TOWER 128.200  
SÄTENÄS APPROACH 134.550

OCA (H)					Final approach		Distance FAF-MAPt 5.6 NM			
Cat of ACFT	A	B	C	D	Dist to RW01 (NM)		5	4	3	2
LPV	374 (205)	386 (217)	395 (226)	405 (236)	ALT		1810	1490	1170	860
LNAV/VNAV	394 (225)	406 (237)	414 (245)	426 (257)	GS	kt	80	100	120	140
LNAV	610 (450)				Rate of descent	ft/min	425	530	635	745
Circling	660 (480)	660 (480)	890 (710)	1070 (890)					850	955

CHANGE: Editorial

## SÅTENÄS

## RNP RWY 01 via IB600

Path Desc	Waypoint Identifier	Fly-over	Course °M(°T)	Dist (NM)	Turn Dir	Altitude	Speed	VPA/RDH	Rec Navaid	Navigation Specification
IF	IB600	-	-	-	-	+2300	-	-	-	RNP APCH
TF	IB723	-	271°(274.7°)	5.0	-	+2000	-210	-	-	RNP APCH

## RNP RWY 01 via IB721

Path Desc	Waypoint Identifier	Fly-over	Course °M(°T)	Dist (NM)	Turn Dir	Altitude	Speed	VPA/RDH	Rec Navaid	Navigation Specification
IF	IB721	-	-	-	-	+2600	-	-	-	RNP APCH
TF	IB723	-	090°(094.4°)	5.0	-	+2000	-210	-	-	RNP APCH

## RNP RWY 01 via IB722

Path Desc	Waypoint Identifier	Fly-over	Course °M(°T)	Dist (NM)	Turn Dir	Altitude	Speed	VPA/RDH	Rec Navaid	Navigation Specification
IF	IB722	-	-	-	-	+2100	-	-	-	RNP APCH
TF	IB723	-	001°(004.6°)	5.0	-	+2000	-	-	-	RNP APCH

Path Desc	Waypoint Identifier	Fly-over	Course °M(°T)	Dist (NM)	Turn Dir	Altitude	Speed	VPA/RDH	Rec Navaid	Navigation Specification
IF	IB723	-	-	-	-	+2000	-	-	-	RNP APCH
TF	IB724	-	001°(004.6°)	5.0	-	@2000	-	-	-	RNP APCH
TF	RW01	Y	001°(004.6°)	5.6	-	@219	-	-3.0/50	-	RNP APCH
TF	IB500	Y	001°(004.6°)	7.1	-	+1500	-	-	-	RNP APCH
DF	IB601	-	-	-	R	-	-230	-	-	RNP APCH
TF	IB600	-	181°(184.7°)	5.0	-	+2300	-	-	-	RNP APCH

## Holding at IB600

Path Desc	Waypoint Identifier	Fly-over	Course °M(°T)	Dist (NM)	Turn Dir	Altitude	Speed	VPA/RDH	Rec Navaid	Navigation Specification
HM	IB600	Y	181°(185.0°)	-	L	+2300	-230	-	-	RNP 1

## FAS Data Block

## RNP RWY 01

## Input data

Operation Type	0
SBAS Provider	1 (EGNOS)
Airport Identifier	ESIB
Runway	01
Runway Letter	0 (None)
Approach Performance Designator	0
Route Indicator	
Reference Path Data Selector	0
Reference Path Identifier	E01A
LTP/FTP Latitude	582505.3905N
LTP/FTP Longitude	0124234.7720E
LTP/FTP Ellipsoidal Height (metres)	85.5
FPAP Latitude	582620.4770N
Delta FPAP Latitude (seconds)	75.0865
FPAP Longitude	0124246.2280E
Delta FPAP Longitude (seconds)	11.4560
Threshold Crossing Height	50.0
TCH Units Selector	0 (feet)
Glidepath Angle (degrees)	3.00
Course Width (metres)	105.00
Length Offset (metres)	64
HAL (metres)	40.0
VAL (metres)	50.0

## Output data

Data Block	10 02 09 13 05 01 00 00 01 31 30 05 DD 02 12 19 28 53 74 05 57 17 9D 4A 02 80 59 00 F4 01 2C 01 64 08 C8 FA AB C8 70 F8
Calculated CRC Value	ABC870F8

## Required Additional Data

ICAO Code	ES
LTP/FTP Orthometric Height (metres)	51.6